



CONTENTS

1-2

BELLE MADAME
HAIR COLLECTION
NEW LOOKS IN
NEW COLOURS

3

BELLE MADAME
FRONTALIS RH
HAIRPIECE
THE OPTIMAL
SOLUTION IN CASE OF
HAIR LOSS ON THE
FOREHEAD

4

WEBSITE
STOCK AVAILABILITY
- JUST ONE CLICK AWAY

DENING HAIR
IN PERSON

"I LOVE MAKING
PEOPLE HAPPY"

Dear readers,

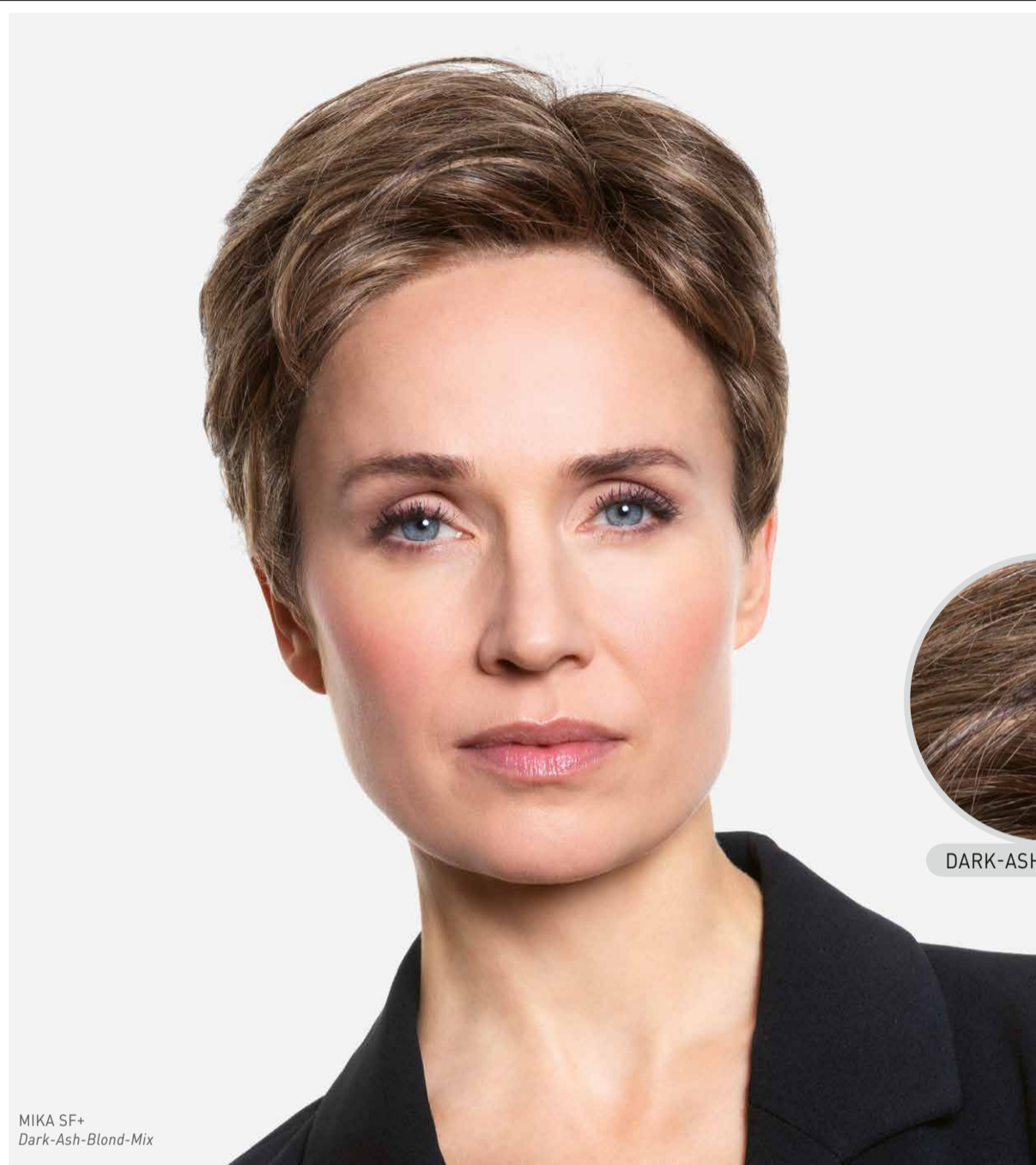
Welcome to the latest edition of our newsletter. We all know that communication and mutual understanding are essential for collective success. Getting to grips with digital communication has increasingly become part of daily life. With our new stock information system, you can now check the availability of the products you want, directly on our website. We think this is an excellent and, above all, helpful tool. And of course, we are also looking forward to your feedback regarding how easy it is to use on an everyday basis.



daily life. With our new stock information system, you can now check the availability of the products

We would also like to present to you our new FRONTALIS RH hairpiece, which offers an optimal solution for hair loss on the forehead. In addition, we have a wealth of innovations and new features to show you in the various BELLE MADAME collections. Fashionable colours, creative models, and versatile sizes await you. Discover all this and a little more in the latest edition of our newsletter. We hope you enjoy reading it.

Yours,
Alexander Dening



MIKA SF+
Dark-Ash-Blond-Mix



DARK-ASH-BLOND-MIX

BELLE MADAME HAIR COLLECTION

NEW LOOKS IN NEW COLOURS



Katalog NEWS 2023

You cannot expand a collection without adding new colours! Slotting deftly in between the familiar Dark-Mocca and Mocca, the cool, ash-brown tones of **COLD-MOCCA** are a perfect addition to the range.

DARK-ASH-BLOND-MIX is a dark blond with a similar ash tone. This is a very common hair colour and one that looks extremely natural. **60-W/22** is white with a touch of blond. **NATURAL-BLOND-GREY** provides a blond base with subtle grey tones. The new colour has a

very natural look. It is similar to Nordic-Ash-Blond, without having any root colour.

The colours **PEPPER-ROOT** and **ROSE-ASH-BLOND** were introduced just last year. The first
To be continued on page 2 ...



... Continuation from page 1

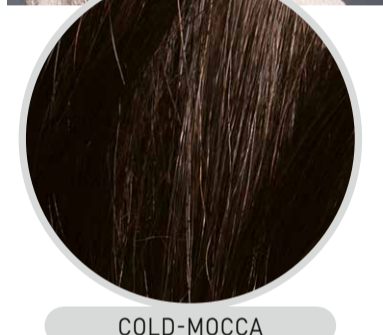
NEW LOOKS IN NEW COLOURS

is reminiscent of Salt&Pepper, without the salt, which is why it comes with darker roots. **CHIARA SF** was the first model to become available in this hair colour in 2022. This year, **FENJA MONO SF** is also available in

Pepper-Root. Rose-Ash-Blond captivates as a pinkish blond with a hint of grey. Introduced last year for the model Olivia Mono SF, this beautiful colour is now also available for **VANESSA SF** and **PAULA MONO SF**. ■



ROSE-ASH-BLOND



COLD-MOCCA



PEPPER-ROOT



60-W/22



NATURAL-BLOND-GREY

CLICK HERE TO GO TO THE DIGITAL COLOUR CARDS.



By clicking on the respective colour, you can bring up images of products that give an even more vivid

depiction of the hair tone. Users can also see which models are available in the selected hair colour.



NEW COLOURS

THE OPTIMAL SOLUTION IN CASE OF HAIR LOSS ON THE FOREHEAD



FRONTALIS

FRONTALIS RH

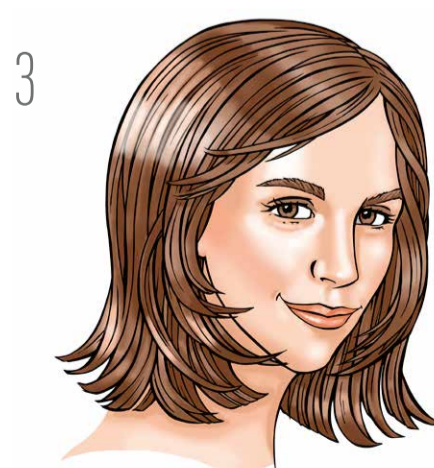
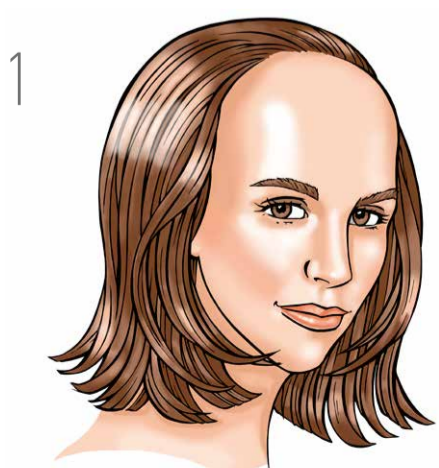
We have excellent news for customers who are experiencing hair loss at the top of the forehead (frontal fibrosing alopecia) or struggling with an extremely high hairline.

The **FRONTALIS RH** hairpiece offers the perfect solution. The hairpiece made from high-quality Remy human hair is easy to attach, comfortable to wear and has a firm hold.

With its natural base (**SUPERFRONT**) and gentle yet firm, slip-resistant PU tailored individually to the wearer, the hairpiece blends perfectly into your own hair. With additional silicone-PU temple

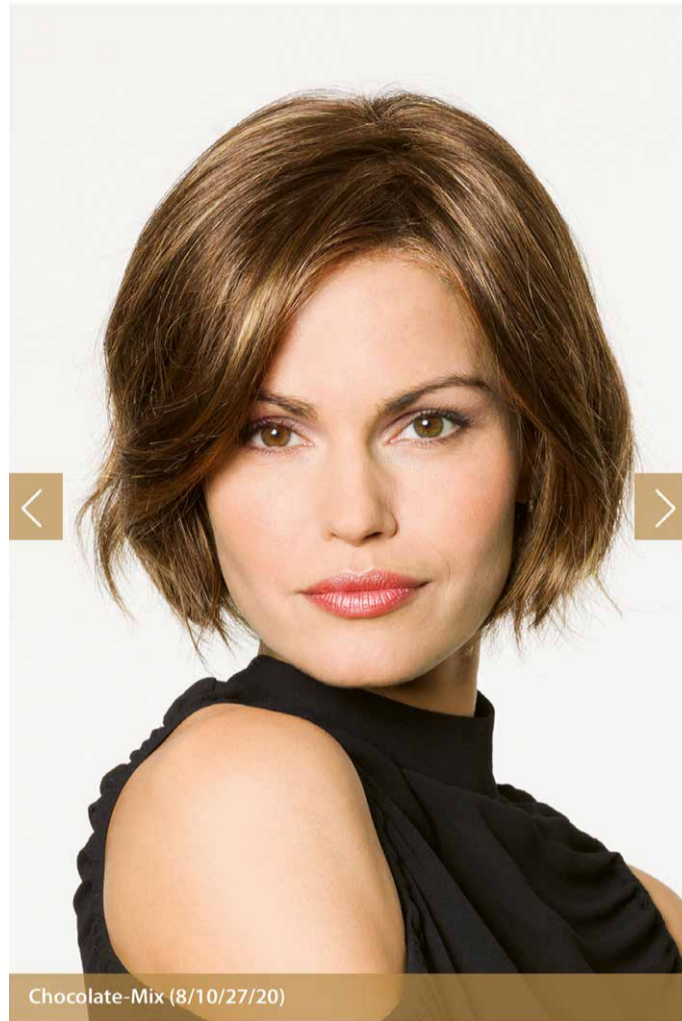
attachments, perfect positioning is seamless.

The size of the hairpiece can also be adjusted thanks to a Velcro strap in the neck area. ■



FRONTALIS RH

STOCK AVAILABILITY – JUST ONE CLICK AWAY



Brown Colours



Espresso-Copper/Mist (1B/30)
● available



Dark-Mocca (4/6-4)
● available



Mocca-Brown (6/8/27R)
● available



Cold-Chocolate (5/8/14)
● few available



Chocolate-Mix (8/10/27/20)
● available



Dark-Copper-Root (8/30/27+Root4)
● not available

Blond Colours



Caramel-Root (12/27/20+P)
● available



Swedish-Blond-Root (25R/22H+Root16)
● few available



Ch... (22H...)
● few available

Getting to grips with digital communication has increasingly become part of daily life. This has prompted Dening Hair GmbH to expand its range of online tools.

Specialist retailers can now view the available stock for all BELLE MADAME and MANAGER TOP wigs and hairpieces by simply entering their personal login details. A traffic light system

provides information about the availability of the products.

Each product colour has its own traffic light: green indicates that the item is in stock and can be

delivered, amber indicates that stock is low for this item, and red indicates that the item is currently out of stock.

If you do not currently have a retailer login, please email Lena Wilke at:

twilke@dening.de

IMPRINT

Dening Hair GmbH
Sorthmannweg 18
22529 Hamburg
Germany
Phone: +49 40 450 172-0
Fax: +49 40 450 172-20
Email: information@dening.de
Website: www.dening.de

DENING HAIR IN PERSON

“I LOVE MAKING PEOPLE HAPPY”



Birgit Bernard

Since the beginning of 2022, Birgit Bernard has been totally committed to her work in order processing. The focus of her work is particularly close to her heart, having worked in the wig and hairpiece trade for 20 years – prior to joining Dening Hair she was employed in the sales force of a specialist retailer. Birgit Bernard loves the products, but

she also loves knowing that she is able to give back a little zest for life to the people who wear them during personally challenging times. Being very familiar with the alternative hair business has many advantages – her comprehensive specialist knowledge of the products simplifies consultations with customers she has often known for many years. Solid, in-

formed advice with a personal consultation is what sets the customer service at Dening Hair apart.

Order Processing can be contacted in person from Monday to Friday between 9.00 a.m. and 5.00 p.m. on the regular telephone number +49 40 450 172-0